

SOUTH SIDE SLOPES NEIGHBORHOOD ASSOCIATION

Christmas/Holiday Party!



Join us! Tuesday December 13th is our annual Christmas/Holiday party. As in the past, dinner will be provided by the SSSNA, and you are welcome to bring a favorite side dish or dessert. It's a great opportunity to meet your neighbors. Festivities begin 7:00pm at St. Paul of the Cross Monastery Retreat Center, 148 Monastery Avenue.

The Façade Program will grant matching funding for home façade improvement from \$500 to \$5000 on a first come first served basis. The property owner must be the person applying for the grant, and the property must be within the Elm St. target area. The project must enhance the façade visible from the public way.

For further information and an application please call the South Side Slopes Neighborhood Association phone number: 412-246-9090. Leave your name, street address, and phone number, and we will be in touch with you shortly. Alternatively, you can email the same information to us at info@southsideslopes.org

Fr. Don Ware, C.P.

Deck the...Façades!

Do you want to improve the outside of your home? Is there something you could do to make it look better? Read on for details of our Elm St. Residential Façade Program...

The western section of the South Side Slopes has been a participant in the State's Elm Street Program for a number of years now. The Elm Street Program has given us money to spend on projects which help our neighborhood to remain clean, green and safe.

The Elm Street Residential Façade Program is one such effort. It is intended to improve the physical appearance of the homes in our Elm Street neighborhoods. This Façade Program is funded in part through the City of Pittsburgh, the State, HUD's Community Development Block Grant, and Pittsburgh's Urban Redevelopment Authority (URA).

What's up with the Steps?

You may have noticed the more visible efforts of the 18th Street Step Lighting project, sprucing-up the concrete finish to better reflect the forthcoming lighting. Our thanks go to Ripley & Sons Construction for going above and beyond in this effort, to Sherwin-Williams for donating the specialized concrete coating, and to Duquesne Light for making the project possible.

In fabricating shops around town, the final elements are coming together: custom light poles are being made from cor-ten I-beams, new cor-ten signage is being cut and assembled, and step light mountings are being prepared. Installation will take place when conditions allow. A special note to residents on Pius Street: a temporary street closure will be required for the (really big) crane we'll need to set the new light poles. We'll keep you posted.

Peter Kreuthmeier

President's Message

I am a child of the sixties and was always enamored by the request of John Kennedy in his statement "Ask not what your country can do for you, but ask what you can do for your country."

The SSSNA, who is truly you and all of your neighbors by our new by-law change, is an active community group helping to make the slopes more livable. I see members cutting grass, building and weeding gardens, picking up litter, covering graffiti and volunteering all over the slopes. Steps are cleared of debris and railings painted. New and brighter lights are bought to ensure safety in many areas of the community.

We have begun work on a community garden and the development of the SS Park into a family friendly area. We have received a grant from Duquesne Light Co to light the 18th steps and enhance the entrance to the Slopes.

Many of our members sit on various Boards and Committees that keep communication open with political and social networks in the city.

So where is this going????

I know what a few hardworking community volunteers out of 3000 slopes residents do for the community. I also admit I do not know what YOU and your neighbors are doing to help with the cleanliness, safety and livability of our Slopes home.

I would love to hear from each of you with your stories about projects or neighborhood work you are quietly doing on a routine basis.

More of us need to get out and work in the neighborhood we grew up in, or the neighborhood we moved into because of the great things it had to offer.

We need more hands to continue the work in the parks, gardens and projects that make the Slopes a cleaner, safer home to all of us. Looking forward to hearing from you.

Paul Lorincy



You Can Help

As a 501(c)(3) non-profit, the SSSNA is entirely, completely, 100% dependent on the generosity of each and every one of our supporters. Your tax-deductible contributions are put to work right here in the Slopes, making all manner of things possible. If you are already a Slopes Supporter, thank you! If you'd like to become one, it's easy:

Online

Just click on the "donate" link on our website, www.southsideslopes.org. If you already have a PayPal account you can sign in and donate immediately. If you do not have a PayPal account, you can create one.

By Mail

Checks are always welcome. Please mail your tax-deductible contribution to:
South Side Slopes Neighborhood Association
P.O. Box 4248
Pittsburgh, PA 15203

In Person

Bring your tax-deductible contribution in person to any one of our meetings, and as always, thank you for your generous support.

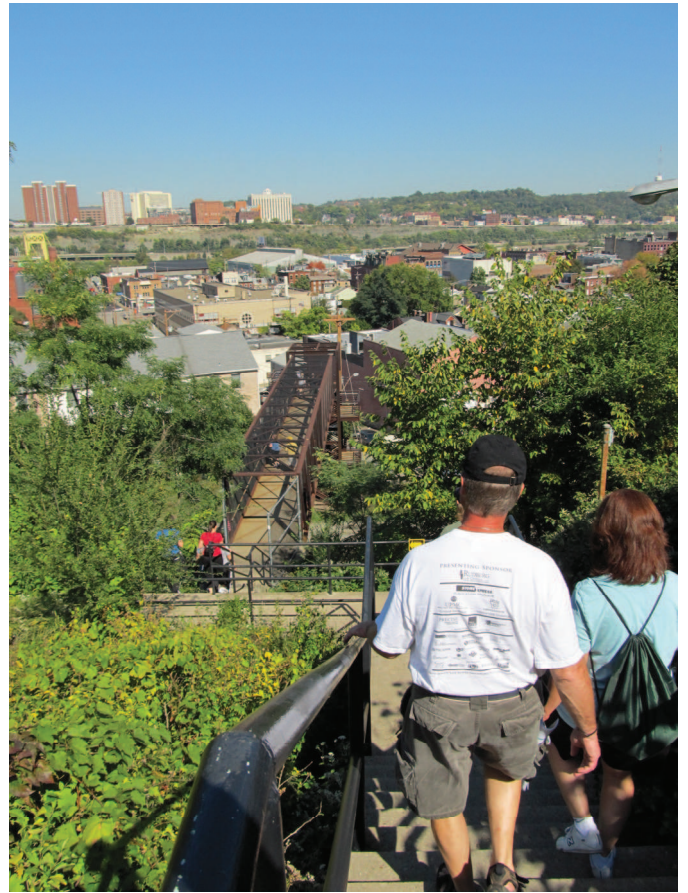
A Terrific Trek 2011

StepTrek 2011 was a huge success! This year the annual pilgrimage to our stairways brought 1050 trekkers to the South Side Slopes, a new record high for us. The two routes utilized this year covered some seldom used stairways and pathways that benefited from the extra attention from the StepTrek Committee as we cut overgrowth, cleaned up trash, and got help from the City for much needed stairway repairs before the event. New to our signature event this year was an active marketplace with artists, vendors, a DJ, the Goodie Truck, and the Franktuary truck that were all staged in the entrance to South Side Park on 21st St. There were also musicians at two of the four water stops along the routes to entertain the trekkers. Our successful event brought much needed funds to the coffers of the SSSNA in the amount of over \$7900 net profit. This will help sustain our organization through the next year with our various bills and projects in the works. Next year we plan on going even bigger! If you would like to get involved with this next year please get in contact with Brian Oswald at brian.oswald@southsideslopes.org

Brian Oswald

photos: Bev Boggio





October General Meeting

Paul Lorincy welcomed Bruce Kraus, Rich Fitzgerald and Chuck Half to the meeting. 38 people attended this general meeting. Reports included:

- Step Trek... Paul Lorincy thanked Brian Oswald, new coordinator of Step Trek, for his organizing the event. Brian then announced that this was our biggest Step Trek ever... 1050 participants. Good PR including Groupon helped. We were blessed with good weather and flawless process.
- Elm Street... Fr. Don Ware, chairperson of Elm St. updated work on the Josephine Street pylon which is being finished, and the beginning of work on the 18th St. steps near Josephine St. He reported on the present status of the Façade Program in the Elm St. district of the Slopes. He finished by mentioning continued efforts on South Side Park and the plan for a community garden there. Judy Dyda, Elm St. manager, then described some of the planned improvements to the 18th steps including LED and safety lighting. The end result should be stunning.
- South Side NID... Susie Puskar, coordinator of the process for establishing a South Side NID, gave an update on the planning to set up a NID. So far there have been public meetings and a survey of business owners and residents of the South Side flats. Planning meetings and feedback meetings will continue. The NID will be for the South Side flats area only, including main street businesses.
- South Side Community Park... Sarah Alessio Shea has been coordinating efforts to set up a community garden at the Bandi Shaum field in the park. The City is on board along with some other partners including Grow Pittsburgh. More PR will take place before Spring to invite those interested to be a part of the community garden.
- Board Elections... Peter Kreuthmeier, Brian Oswald, Mark Zalenchak, Pavel Yakolev and Fr. Don Ware were re-elected for a new term of two years. The Board will appoint a member for one year to take the Board position of Misi Bielich who resigned. We thanked Misi for her years of dedicated service to our neighborhood association.
- From the Mayor's Office... Chuck Half briefed us on the success of the 311 call program. He alerted us to a brochure put out by the City regarding safety issues surrounding Halloween. He commented on all of the good work done by Pittsburgh which flowered in the visit of President Obama to our city yesterday.
- Rich Fitzgerald greeted those attending our meeting and praised the work of SSSNA.
- Bruce Kraus fielded concerns and issues including: public safety in the South Side flats, the Responsible Hospitality Initiative for Bar Owners in the flats, house rentals and too many people living in these rentals with limited parking space for other neighbors... the latter is an issue to BBI especially. Bruce commented that we need an overall plan to deal with many of the South Side issues which are difficult to tackle one by one. We also need coordinated efforts among the various city departments. Bruce finally updated and praised the work being done on the renovation of our South Side Library – to be reopened by August of 2012.

Fr. Don Ware, C.P.

Meet the Board

The Board meets monthly to advance our mission, "Neighbors working together to make the Slopes a more livable, beautiful, and safe community."

Paul Lorincy – President
Brian Oswald – Vice President
Pavel Yakovlev – Treasurer
Maggie Buck – Secretary
Denise Fillip
Peter Kreuthmeier
Brad Palmisiano
Sarah Alessio Shea
Fr. Donald Ware
Mark Zalenchak

and our newest member
Molly McClelland!

Molly and her fiancé, Jeff first stumbled upon the Slopes in the summer of 2009 while riding pushing their bikes *up, up, up* to catch the best views of their beloved Pittsburgh. Within months of their maiden voyage, Molly and Jeff *CROSSED A BRIDGE* (gasp) to call the South Side Slopes their new city home. As a mom to 11-month-old Jeffrey and a newly appointed board member, Molly is anxious to work with her South Side Slopes neighbors to create the same strong sense of community she was fortunate to experience growing up in the South Hills. Molly is an academic advisor at Point Park University where she also serves as the Program Director of the 2HOURS 2CHANGE mentoring initiative, a program that teaches positive character values to vulnerable youths in Pittsburgh's North Side. When she is not chasing after Jeffrey and/or Jeff, Molly is a writer, humorist, and blogger whose work can be found on her site momsaidwhat.com and as a columnist ("Mom Spelled Backwards") for *A Hopeful Sign* online magazine.



Molly and Jeffrey

Elm Street Update

The Elm Street committee continues work on several projects beyond the Step Lighting and Façade Grant Programs mentioned earlier in this newsletter:

We are working with several partners to continue upgrades to South Side Park. Present partners include the Student Conservancy, SSSNA, and Pittsburgh DPW. SSLDC has been coordinating these efforts thus far. As SSLDC winds down, we will form a new committee to carry this work forward.

Efforts are also underway to form a second Elm Street District, on the east side of the Mission St. Bridge. The SSSNA Board will work with this effort.

Fr. Don Ware, C.P.



**STORExpress has
Indoor Climate
Controlled Self Storage
in the South Side?
I'm there!**

- **Store just about *anything!***
- Over 70 Unit Sizes to Choose From
- Month-to-Month Leasing
- Convenient Indoor Loading Docks
- 24-Hour Access Available
- Around-the-Clock Surveillance
- Electronic Access
- Pest Control Program
- **Six Convenient Pittsburgh Locations**



▪ **STORExpress, South Side** ▪
▪ **200 S. 22nd Street ▪ Pittsburgh, PA 15203 ▪ (412) 532-6990** ▪

Special Offer From



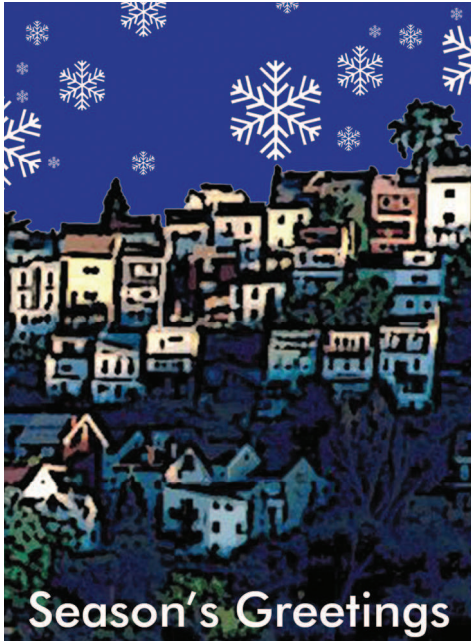
**2nd Month FREE RENT
FREE TRUCK & GAS for Move-In
20% OFF All Packing Supplies**

Expires 12/31/2012. Restrictions may apply. Cannot be used with any other offer. Offer Code: SSS

www.storexpress.com

South Side Slopes Neighborhood Association
P.O. Box 4248
Pittsburgh, PA 15203

NON-PROFIT ORGANIZATION
US POSTAGE
PAID
PITTSBURGH PA
PERMIT NO 603



www.SouthSideSlopes.org

Thank you to our Supporters...



Mark your calendars:

Christmas/Holiday Party

12/13/11, St. Paul's 7:00pm

Meetings & Events 2012

3/13/12 General Meeting

5/8/12 General Meeting

7/10/12 Annual Picnic

10/9/12 Annual Meeting

12/11/12 Christmas Celebration